

Climate Overview

Since July 2023

Corey Davis

Assistant State Climatologist
State Climate Office



Monthly Statewide Temperatures

Jul 2023	Aug	Sep	Oct	Nov	Dec	Jan 2024	Feb	Mar	Apr	May	Jun	Jul	Aug
29th WARMEST	29th WARMEST	55th WARMEST	49th WARMEST	55th WARMEST	21st WARMEST	42nd WARMEST	16th WARMEST	16th WARMEST	16th WARMEST	18th WARMEST	20th WARMEST	19th WARMEST	57th WARMEST



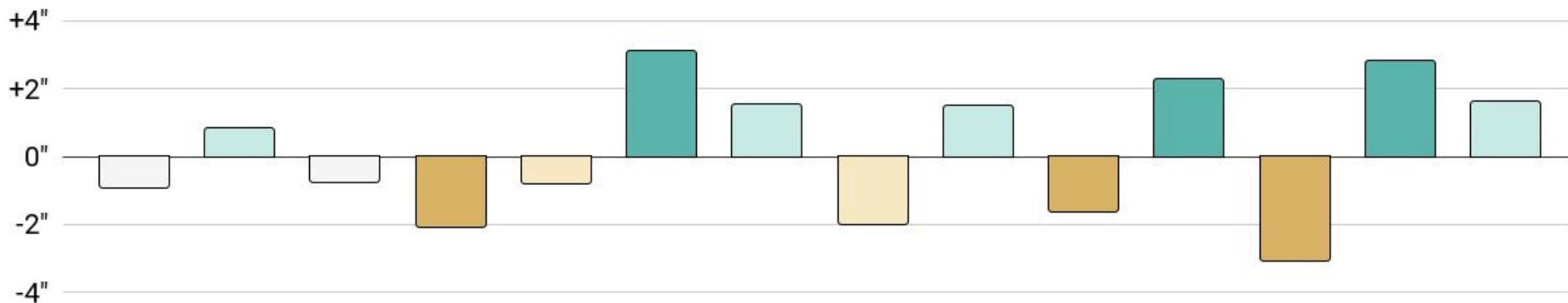
Departures compared to 1901 to 2000

Rankings based on data since 1895



Monthly Statewide Precipitation

Jul 2023	Aug	Sep	Oct	Nov	Dec	Jan 2024	Feb	Mar	Apr	May	Jun	Jul	Aug
44th DRIEST	36th WETTEST	52nd DRIEST	11th DRIEST	42nd DRIEST	7th WETTEST	17th WETTEST	16th DRIEST	20th WETTEST	13th DRIEST	10th WETTEST	2nd DRIEST	8th WETTEST	23rd WETTEST



Departures compared to 1901 to 2000

Rankings based on data since 1895



Precipitation Extremes



Precipitation Extremes



Photo by NC Division of Aviation

Precipitation Extremes



Columbus County, North Carolina



Photo by NC Division of Aviation



Photo by Les High/Border Belt Independent

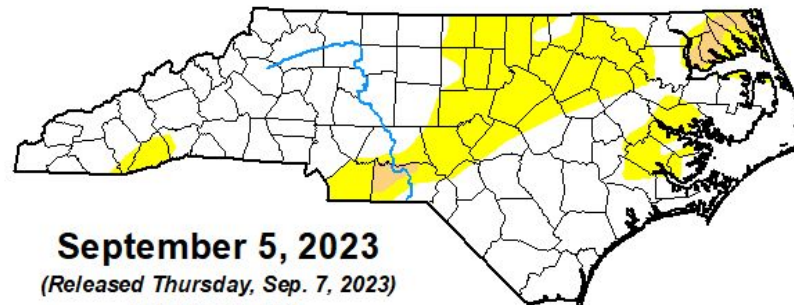
July/August 2023

19th
WARMEST

64th
DRIEST



U.S. Drought Monitor North Carolina



September 5, 2023

(Released Thursday, Sep. 7, 2023)

Valid 8 a.m. EDT

Intensity:

None

D0 Abnormally Dry

D1 Moderate Drought

D2 Severe Drought

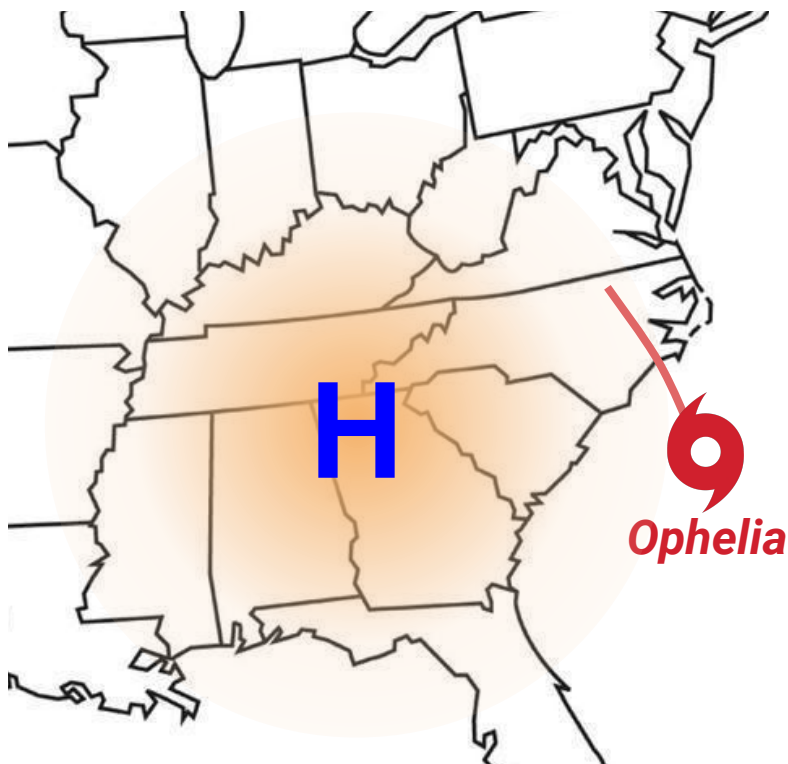
D3 Extreme Drought

D4 Exceptional Drought

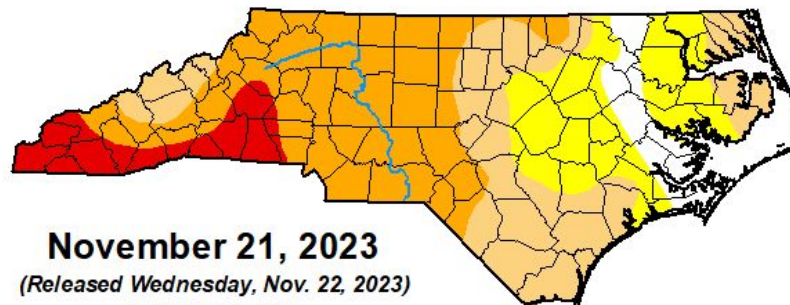
Fall (SON) 2023

43rd
WARMEST

16th
DRIEST



U.S. Drought Monitor North Carolina



November 21, 2023

(Released Wednesday, Nov. 22, 2023)

Valid 7 a.m. EST

Intensity:

None

D0 Abnormally Dry

D1 Moderate Drought

D2 Severe Drought

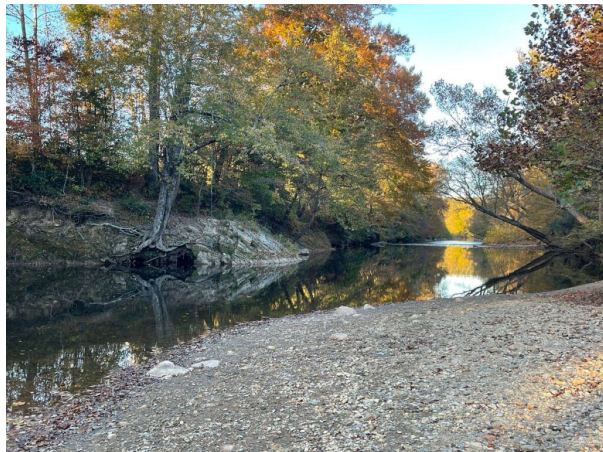
D3 Extreme Drought

D4 Exceptional Drought

Fall Drought Impacts



Low Streamflows
in western rivers



By Dan Crawley/McDowell News



Low Water Levels
in lakes & reservoirs



By Travis Long/News & Observer

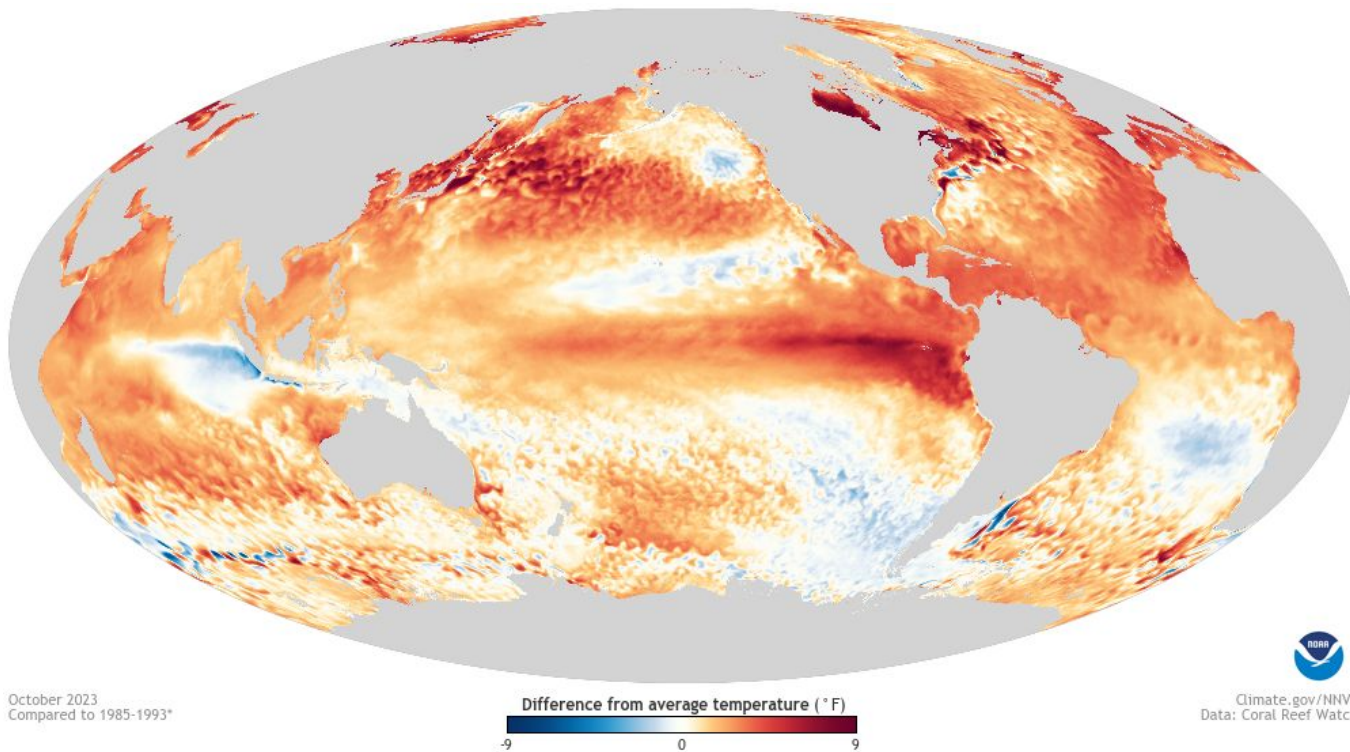


Wildfire Activity
in the Mountains



By US Forest Service

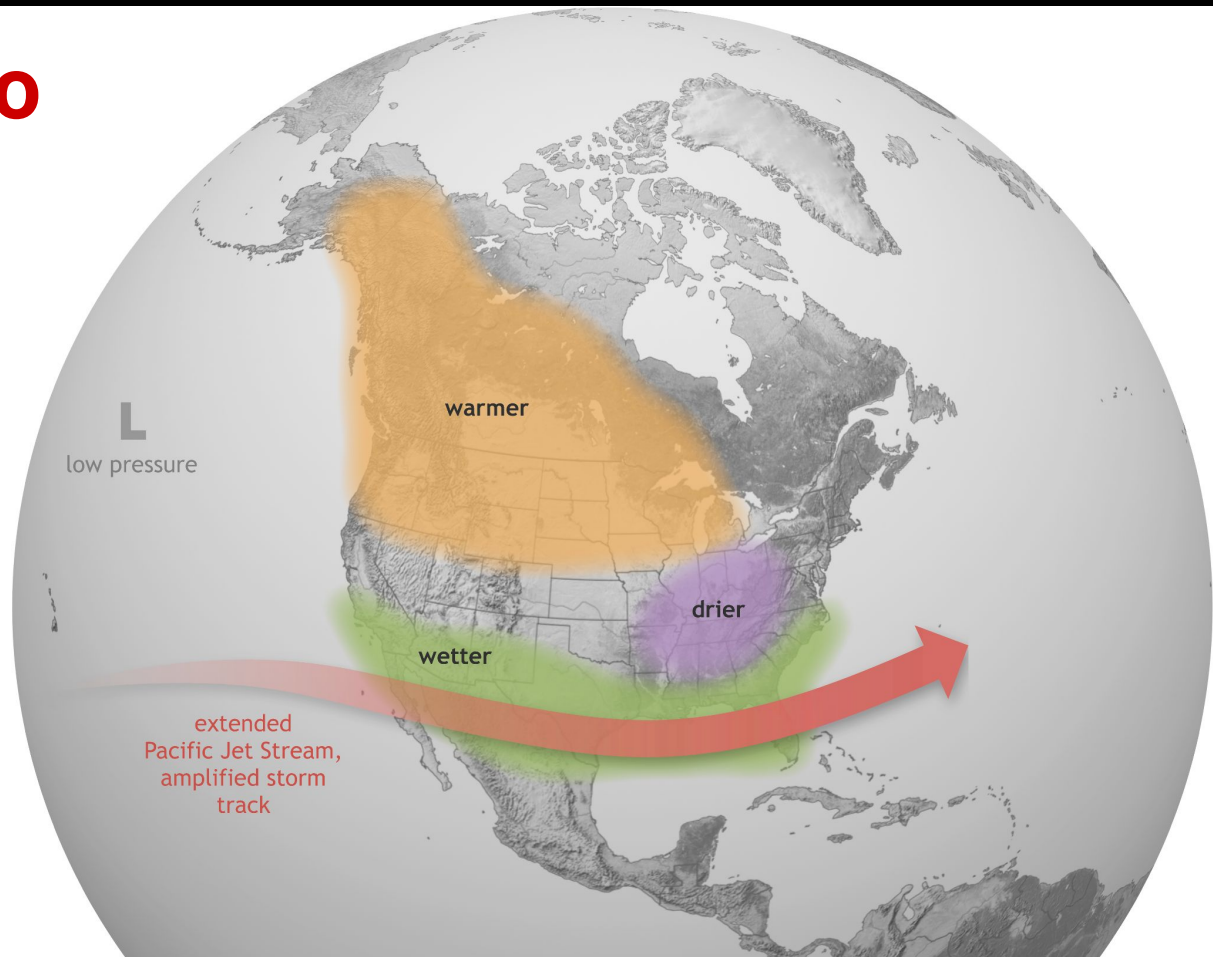
Expecting El Niño



Expecting El Niño

During similar El Niño events:

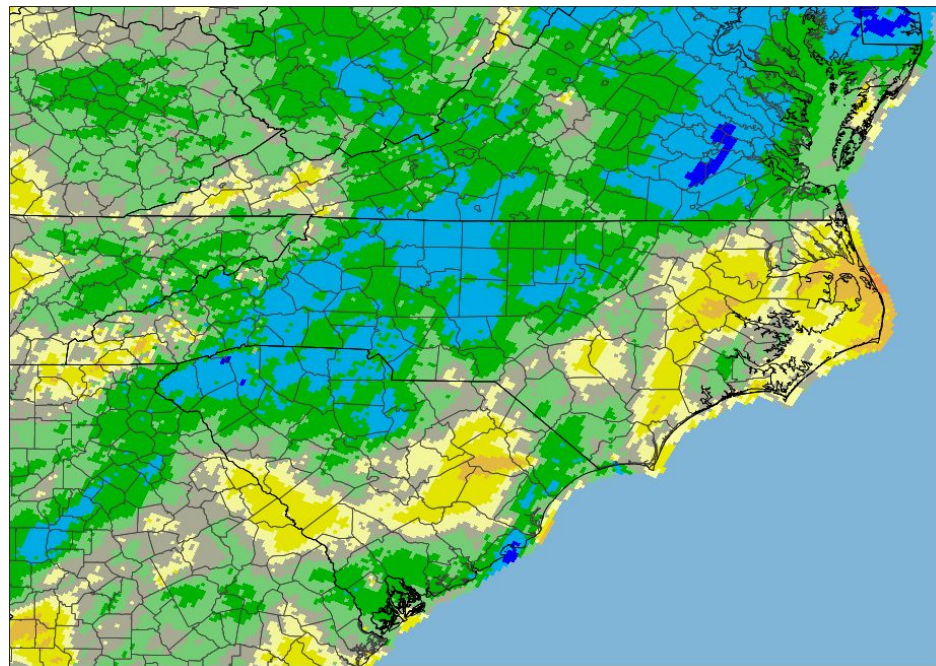
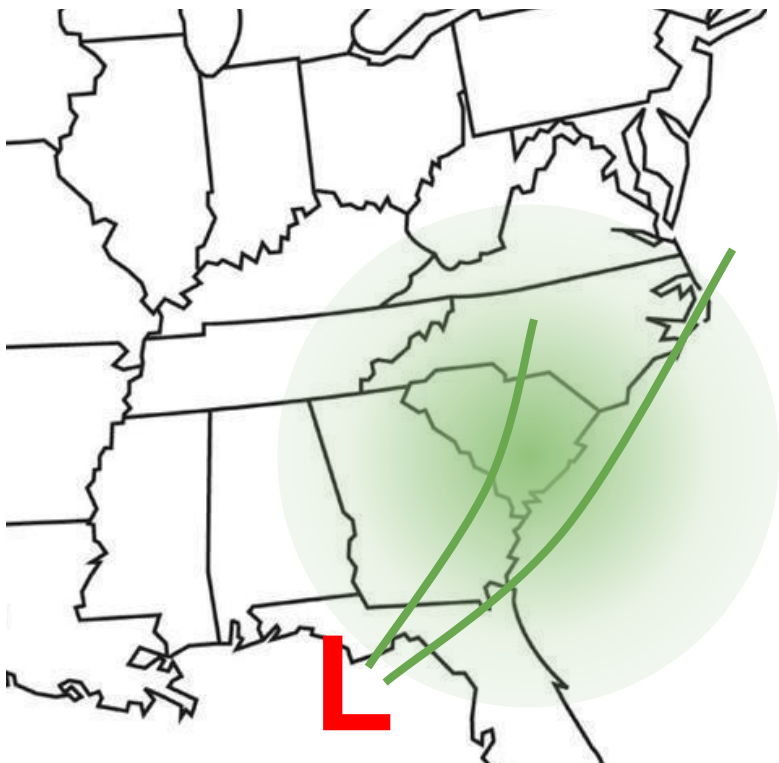
Month/Season	Times Wetter than Average
December	7 of 12
January	7 of 12
February	10 of 12
Winter (DJF)	9 of 12



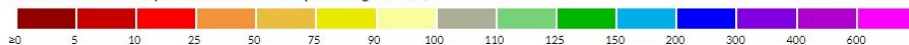
Winter (DJF) 2023-24

19th
WARMEST

25th
WETTEST



Percent of Normal Precipitation for the 90 days ending Feb. 29, 2024

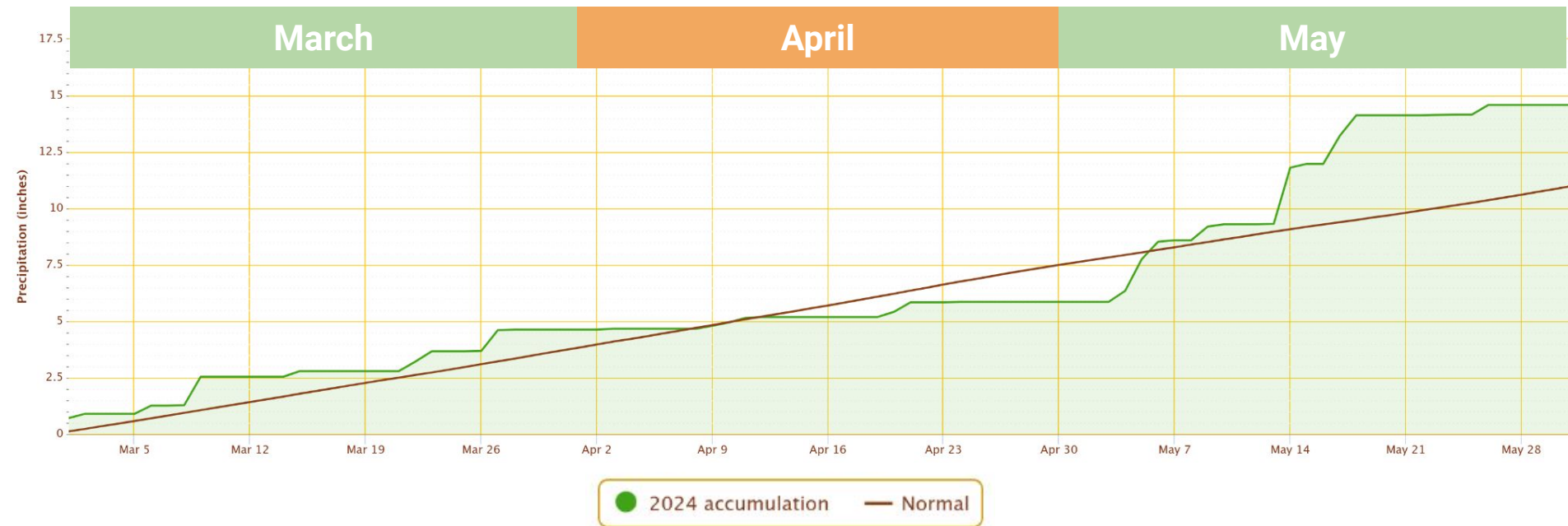


Spring (MAM) 2024

3rd
WARMEST

27th
WETTEST

Accumulated Precipitation in Greensboro: March to May 2024



Ag Impacts in the Spring



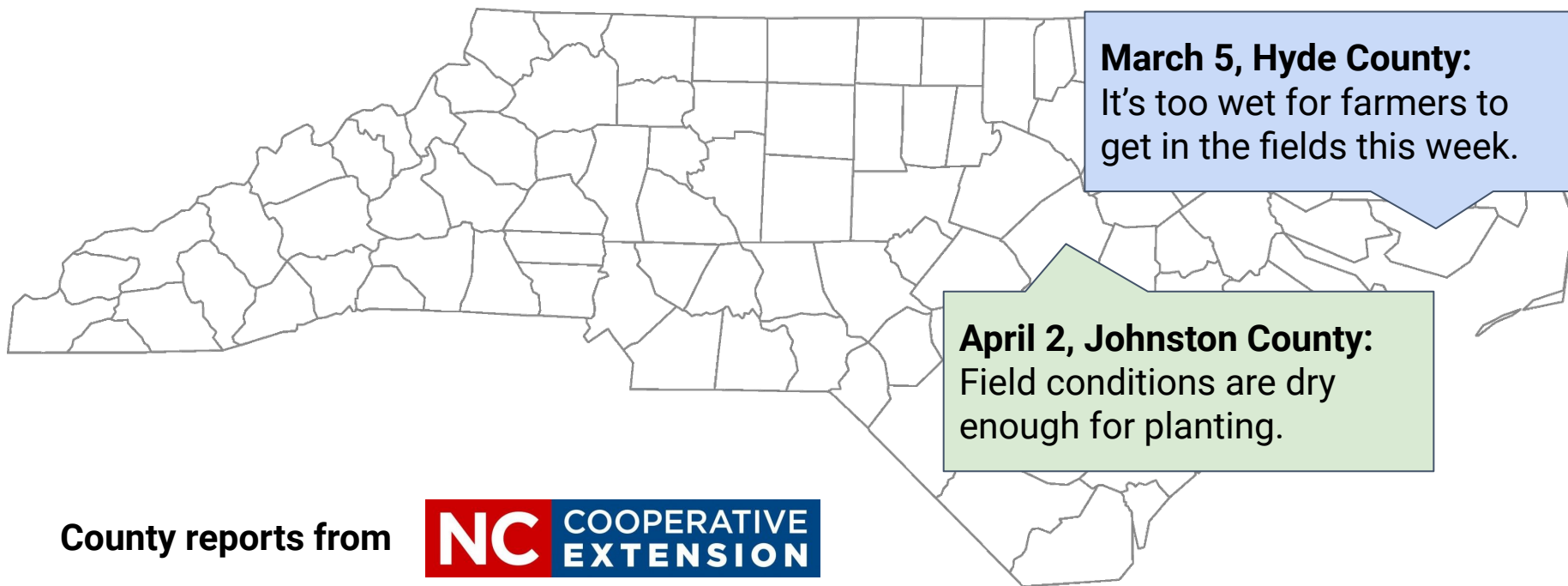
County reports from



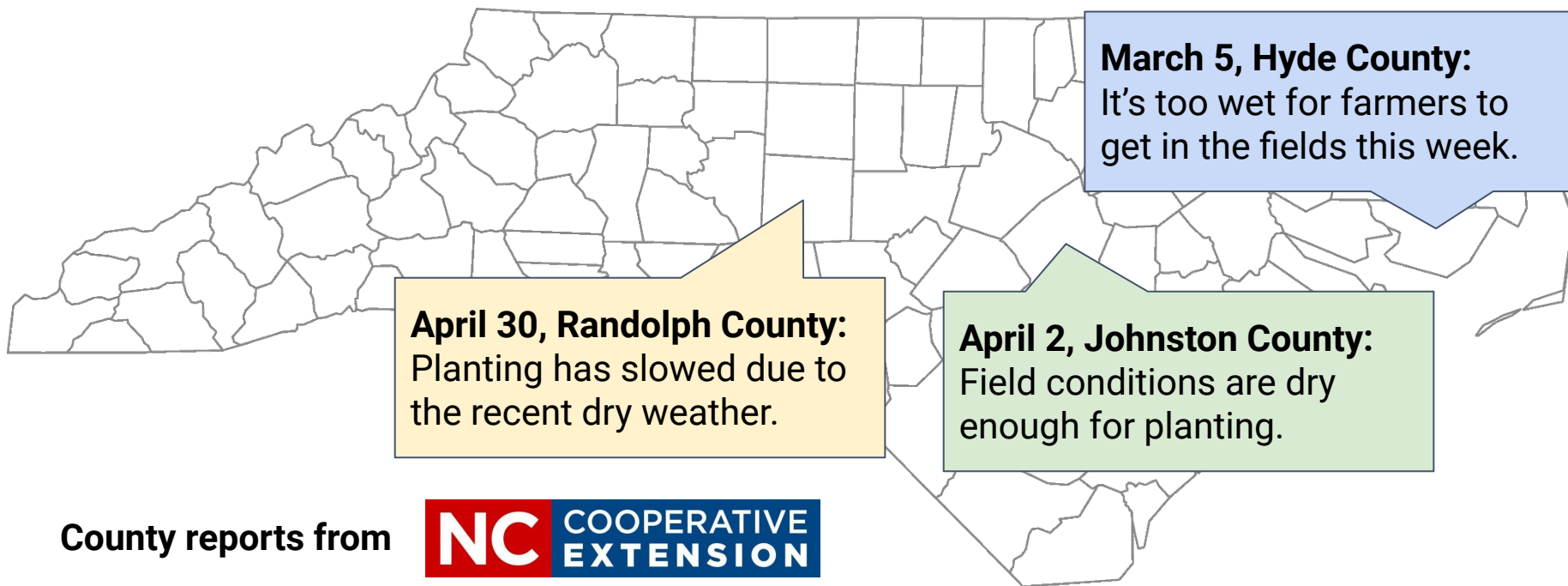
Ag Impacts in the Spring



Ag Impacts in the Spring



Ag Impacts in the Spring



Ag Impacts in the Spring

June 4, Wake County:

Tobacco looks good after rain in the last 2 weeks of May.

March 5, Hyde County:

It's too wet for farmers to get in the fields this week.

April 30, Randolph County:

Planting has slowed due to the recent dry weather.

April 2, Johnston County:

Field conditions are dry enough for planting.

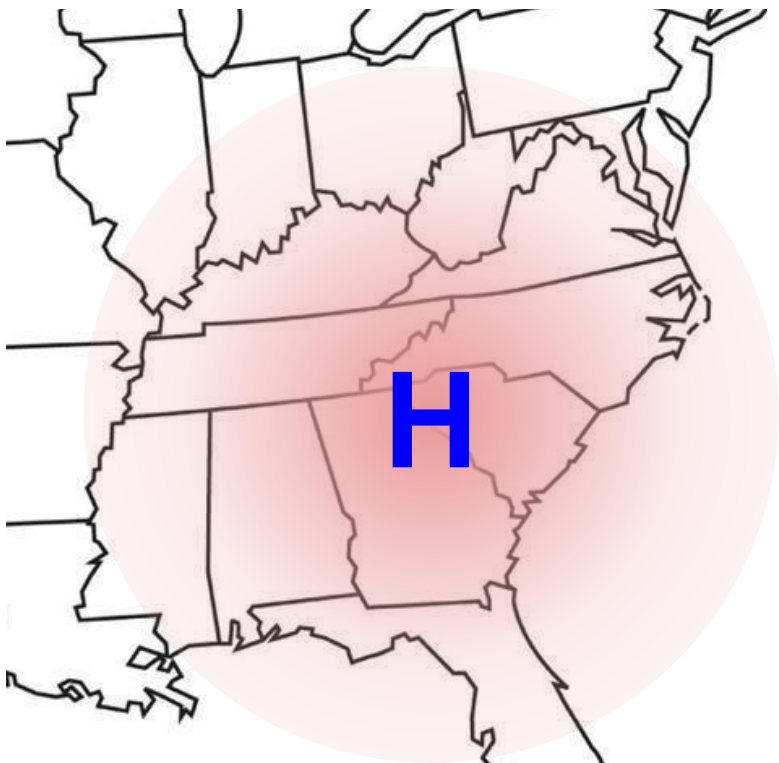
County reports from



June 2024

20th
WARMEST

2nd
DRIEST



Corn in Robeson County; by Adrian Locklear

June Drought Emergence

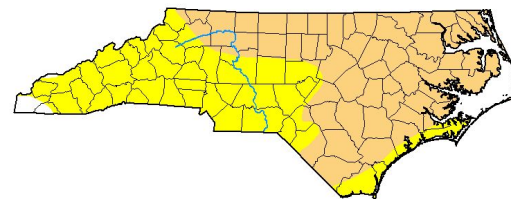
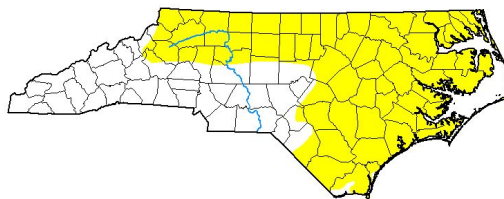
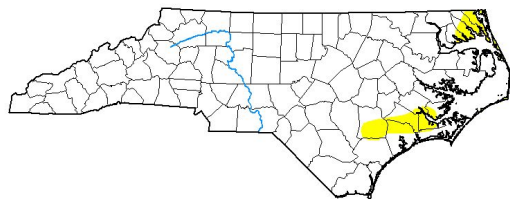
June 11



June 18



July 25



**+60.9%
to D0**

**+56.5%
to D1**



Abnormally
Dry

Moderate
Drought

Severe
Drought

Extreme
Drought

Exceptional
Drought

U.S. Drought Monitor

Summer Drought Impacts



Crop Damage/Loss
especially to corn



By Carolina Public Press



Water Conservation
for eastern locales



By The East Group

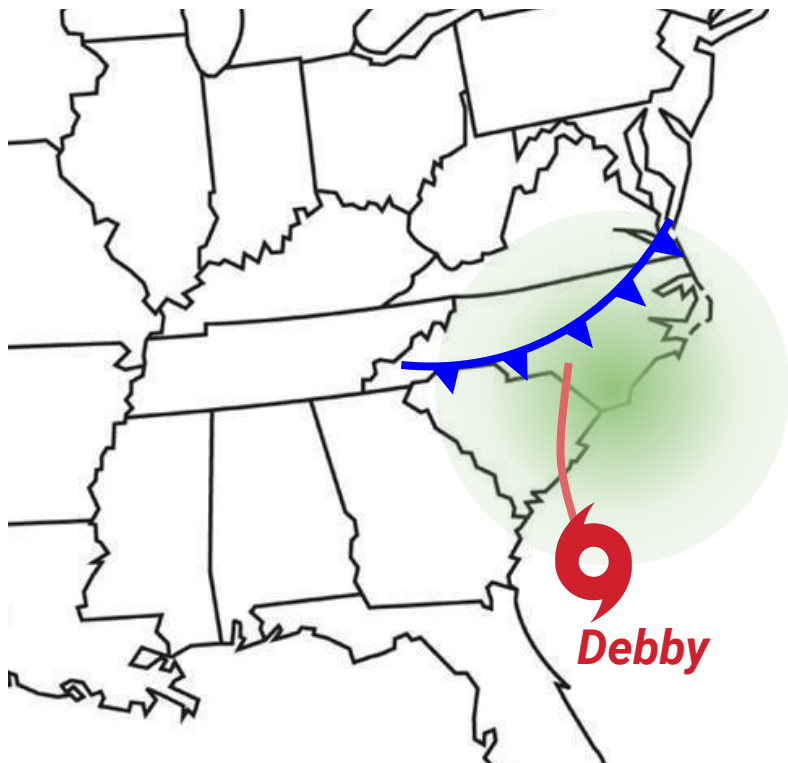


Wildfire Activity
along the coast



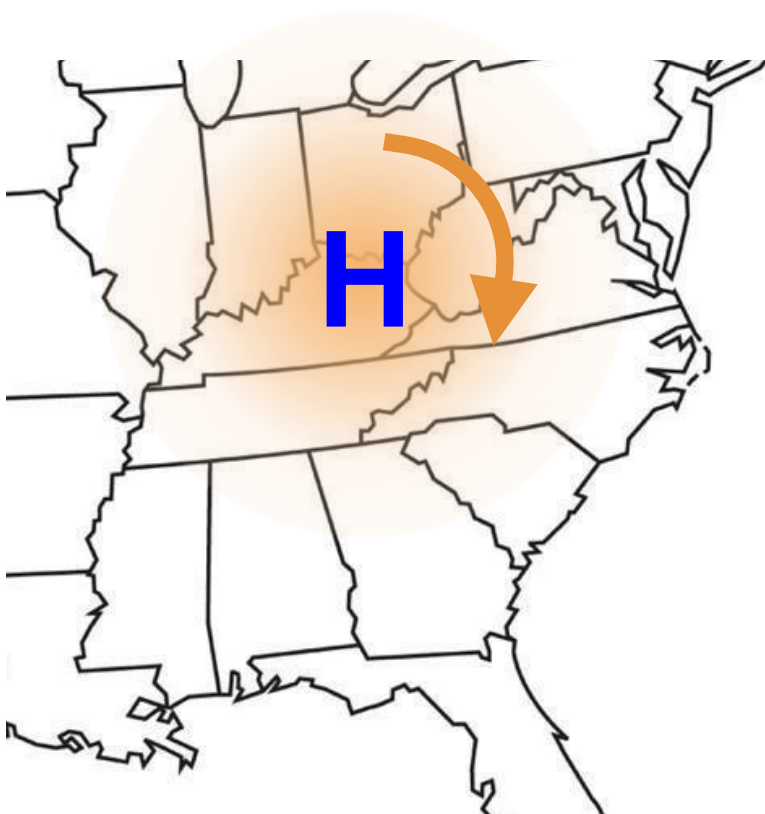
By Carolina Coast Online

July and Early August



High water in Charlotte; by Corey Callaway

Conditions Since Debby



Pigeon River in September; by Rex Hodge/WLOS

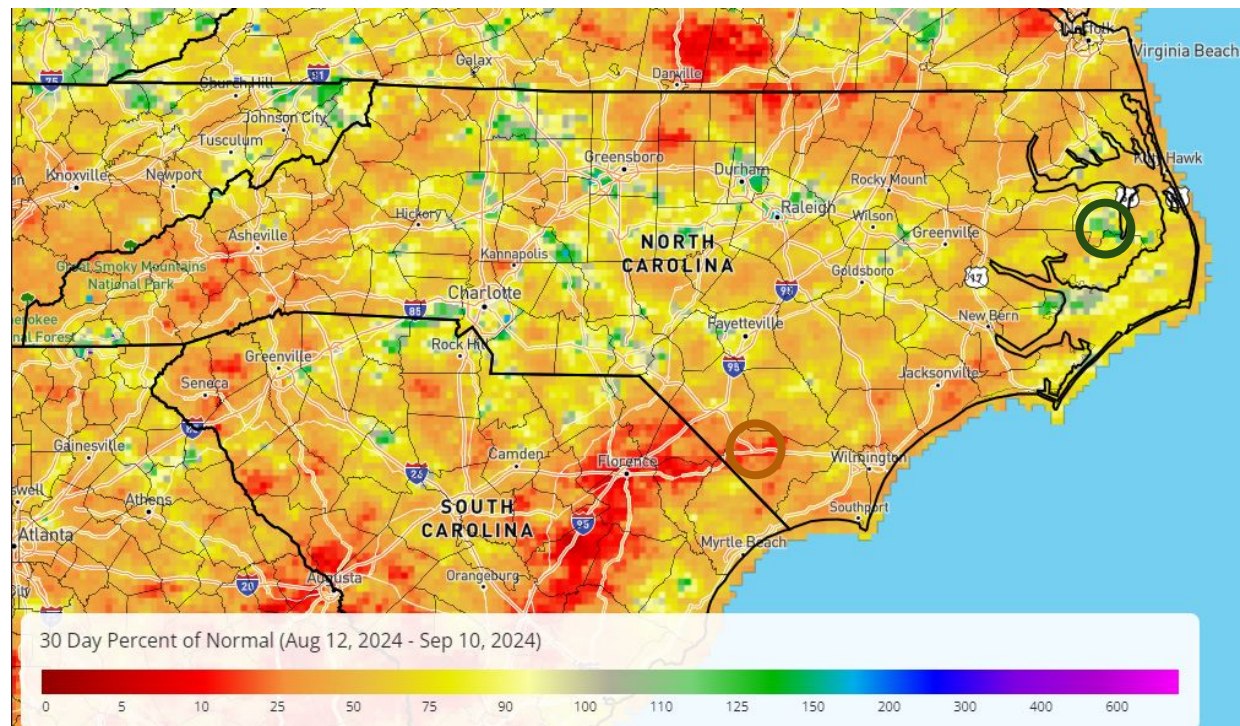
Past 30 Days (Aug. 12 to Sep. 10)

○ **Wettest Spot:**

Gum Neck: 11.45"
(165% of normal)

○ **Driest Spot:**

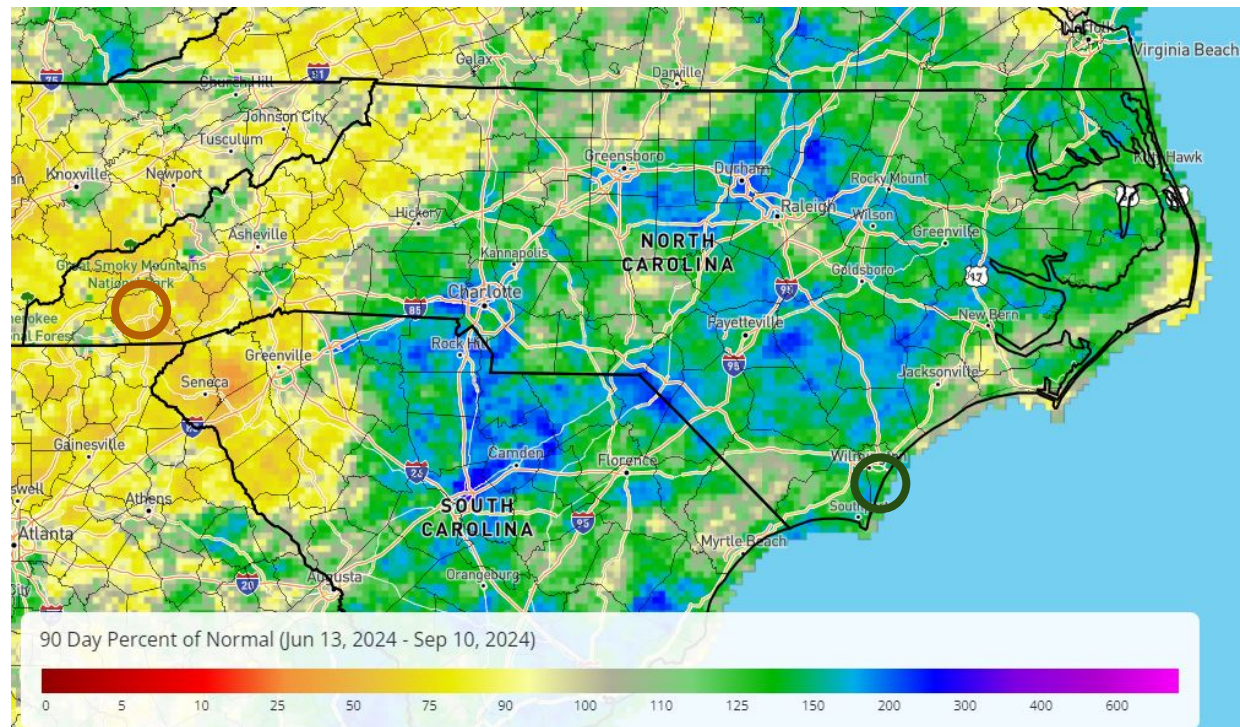
Whiteville ECONet: 0.34"
(7% of normal)



Past 90 Days (Jun. 13 to Sep. 10)

○ **Wettest Spot:**
Wilmington 7 SE: 30.58"
(129% of normal)

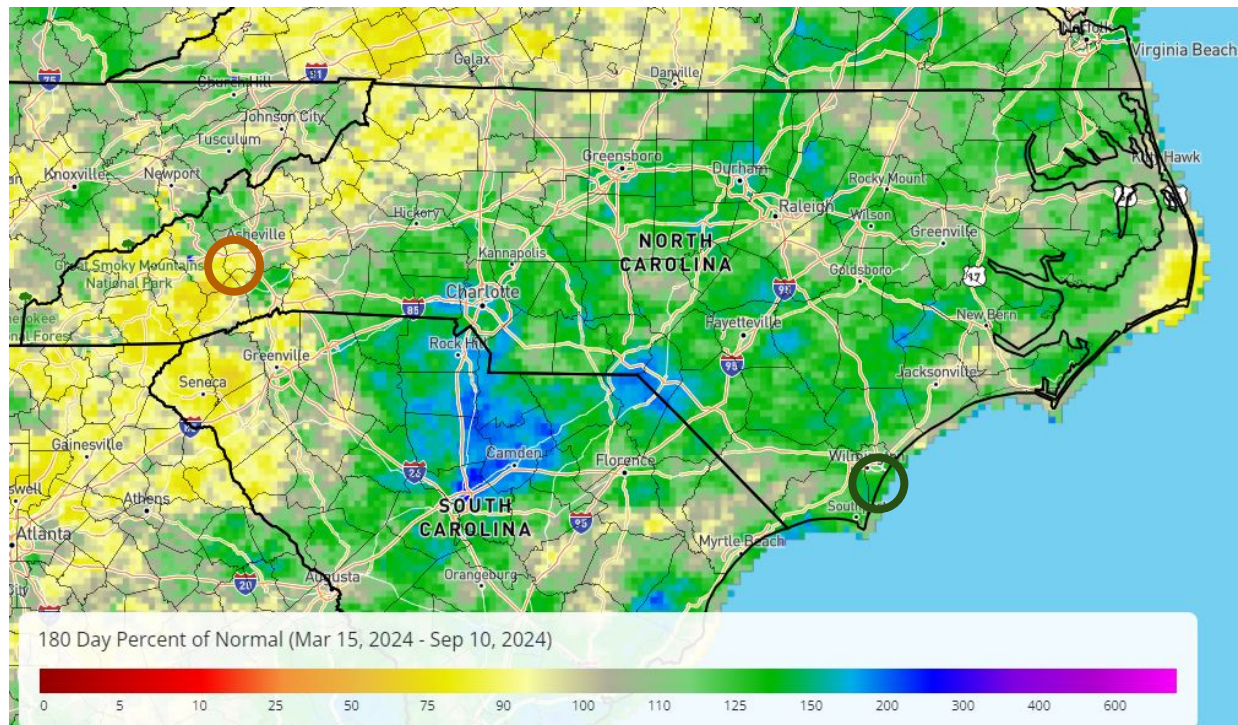
○ **Driest Spot:**
Franklin: 5.64"
(43% of normal)



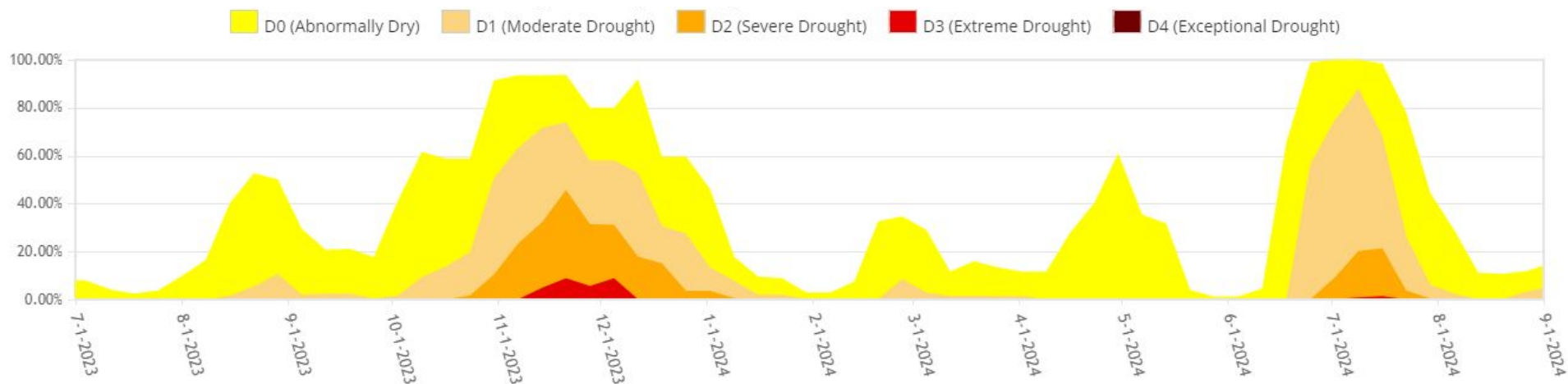
Past 180 Days (Mar. 15 to Sep. 10)

○ **Wettest Spot:**
Wilmington 7 SE: 44.33"
(123% of normal)

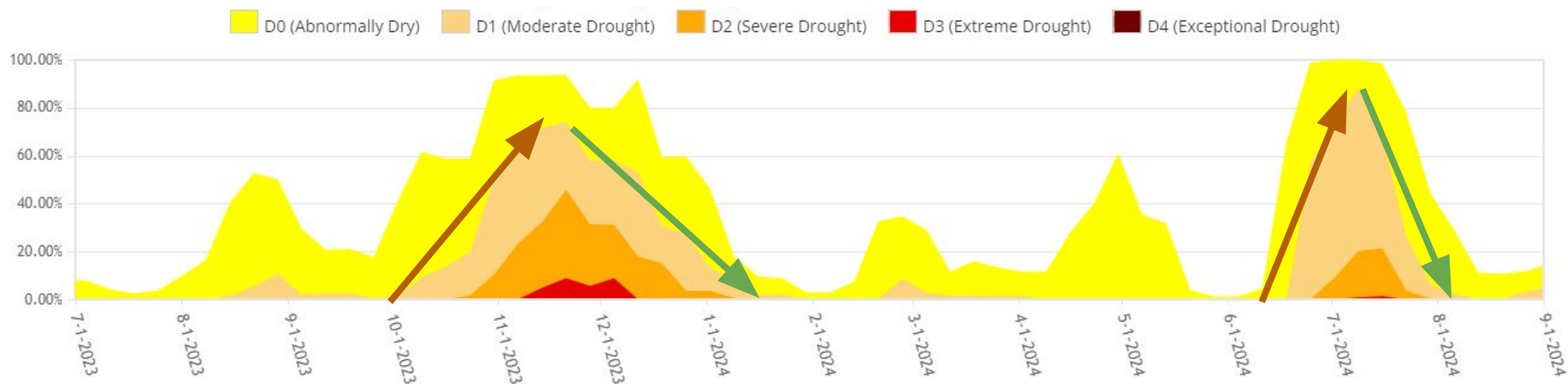
○ **Driest Spot:**
Candler 1 W: 17.44"
(72% of normal)



This Year's Drought Progression



This Year's Drought Progression



Charlotte

26 consecutive dry days
(0.98 inches in October)

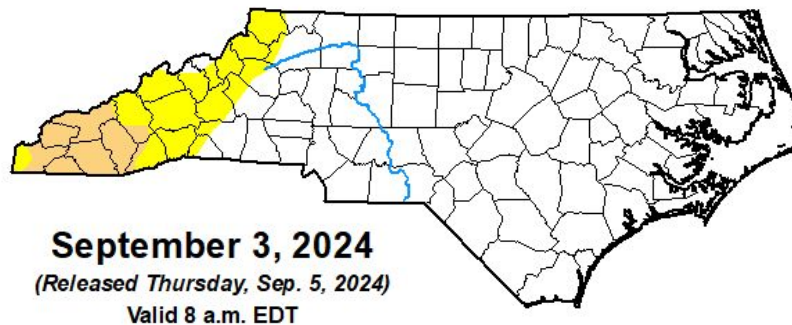
Greenville

23 consecutive dry days
(longest since Nov. 2001)

In Summary

- Two notable droughts with very different impacts
- Quick recoveries from each during wetter periods
- Prevailing warm weather
- Recently, dry in western NC this summer

U.S. Drought Monitor North Carolina



Intensity:

None

D0 Abnormally Dry


D1 Moderate Drought

D2 Severe Drought

D3 Extreme Drought

D4 Exceptional Drought

Questions?



Contact me:
cndavis@ncsu.edu